

BPM & Workflows: Digitization, Optimization, Automation



Eugenio Lobo Cruz

Management Consultant
BOC Group

Welcome!



HOST



VINCENT PAQUETTE

BOC Group



PRESENTER



EUGENIO LOBO CRUZ
MANAGEMENT CONSULTANT

BOC Group

BPM & Workflows

Digitalization, Optimization and Automation

A Good Process is Only “Half the Battle”

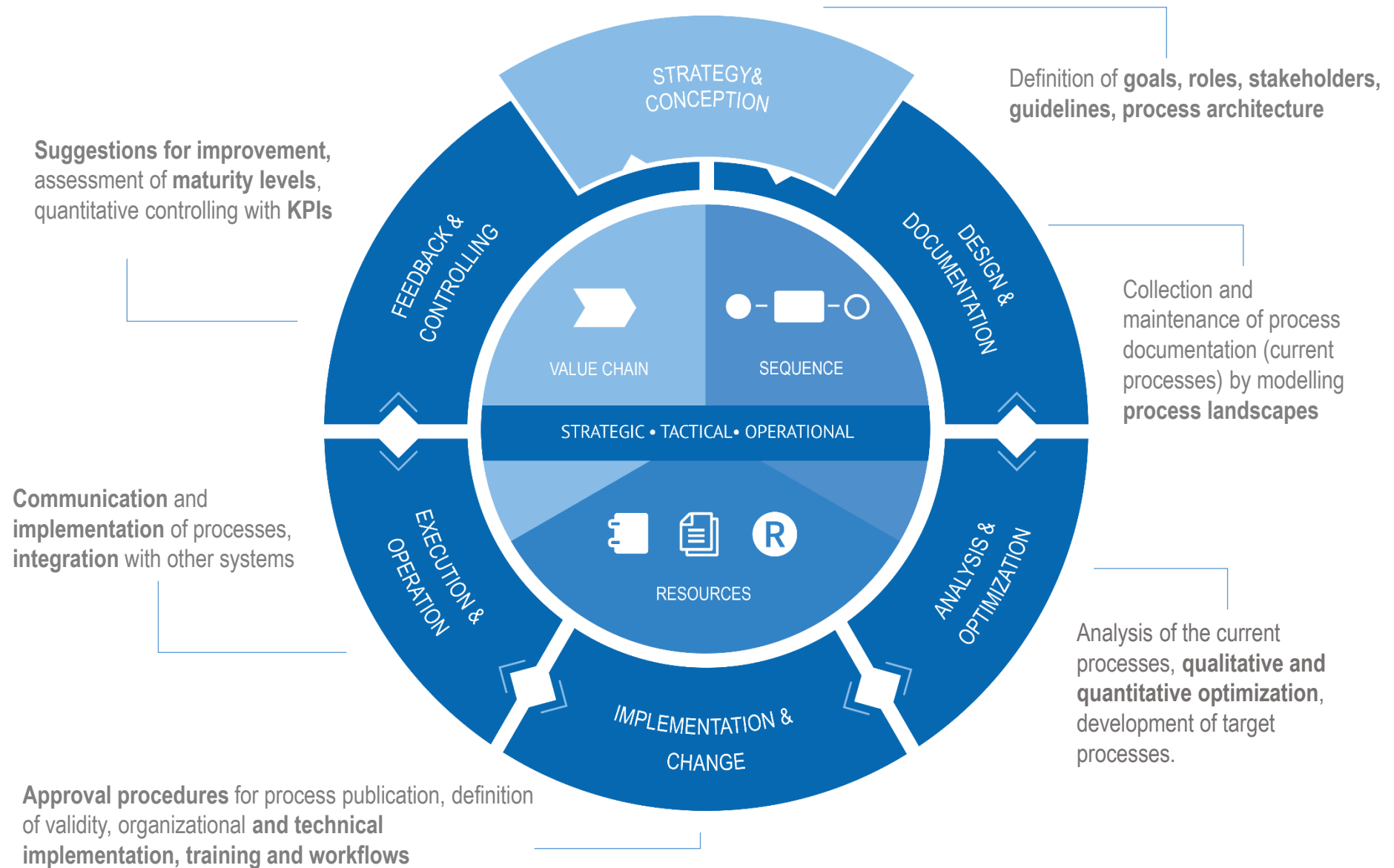


“The first rule of any technology used in a business is that automation applied to an efficient operation will magnify the efficiency.

*The second is that **automation applied to an inefficient operation will magnify the inefficiency.**”*

Bill Gates

Classification of Process Automation

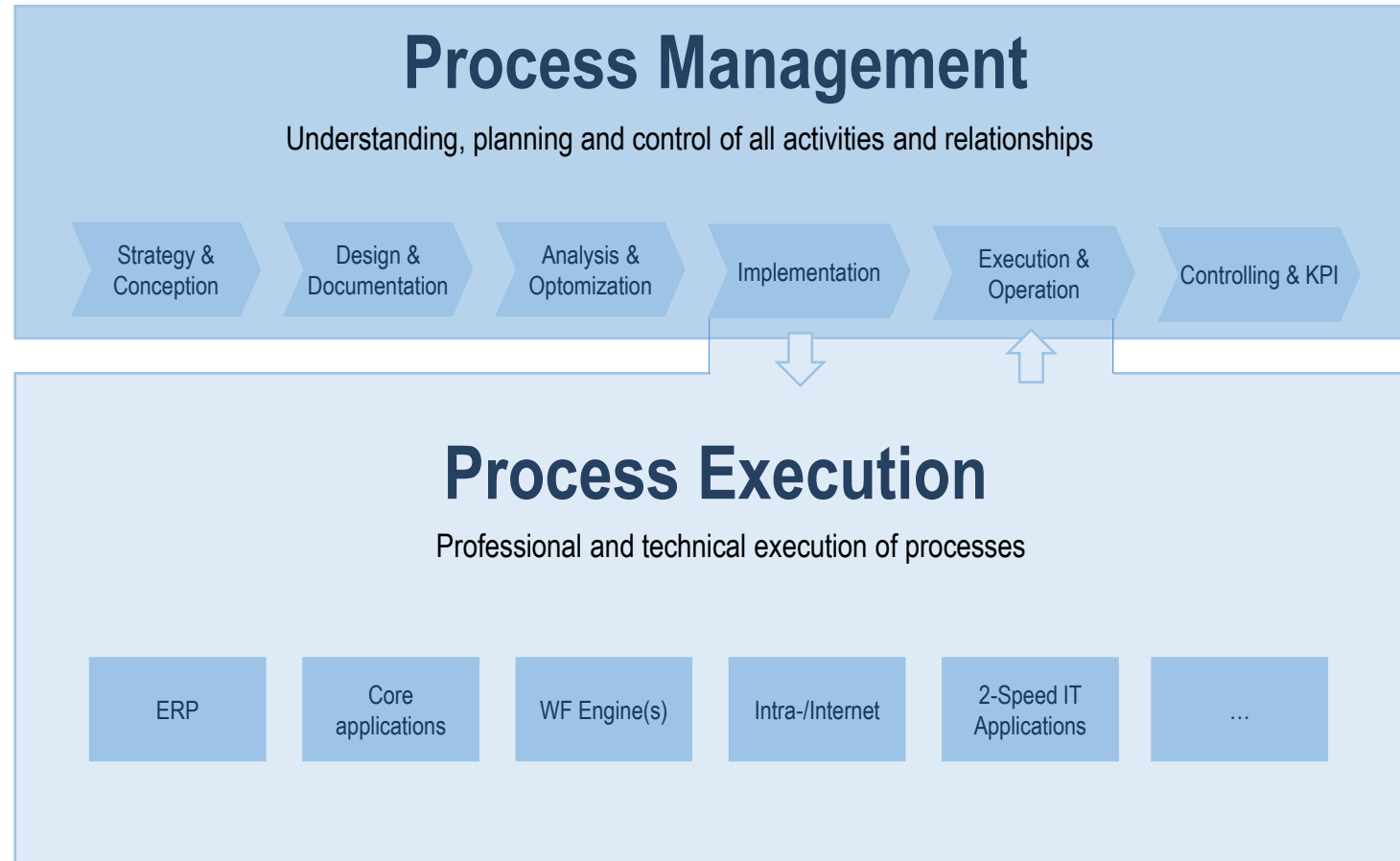


BPM & Automation – Same Procedure?

- ▶ To anchor process management, you need a **cyclical process model with BPM roles permanently anchored in the organization.**
- ▶ To make processes executable you need one **project-like implementation the results of which are then anchored in existing structures.**

Process Execution as part of Process Management

Automation as a project – maximum possible flexibility of integration



“The Challenger Series”

Become more agile, sustainable, better.

Digital


design


connect


engage

Real

Process Transformation & Automation Challenge

Improve and digitalize the process – in an agile way.
Automate quickly.
Deliver results. Become better.

Digital


design

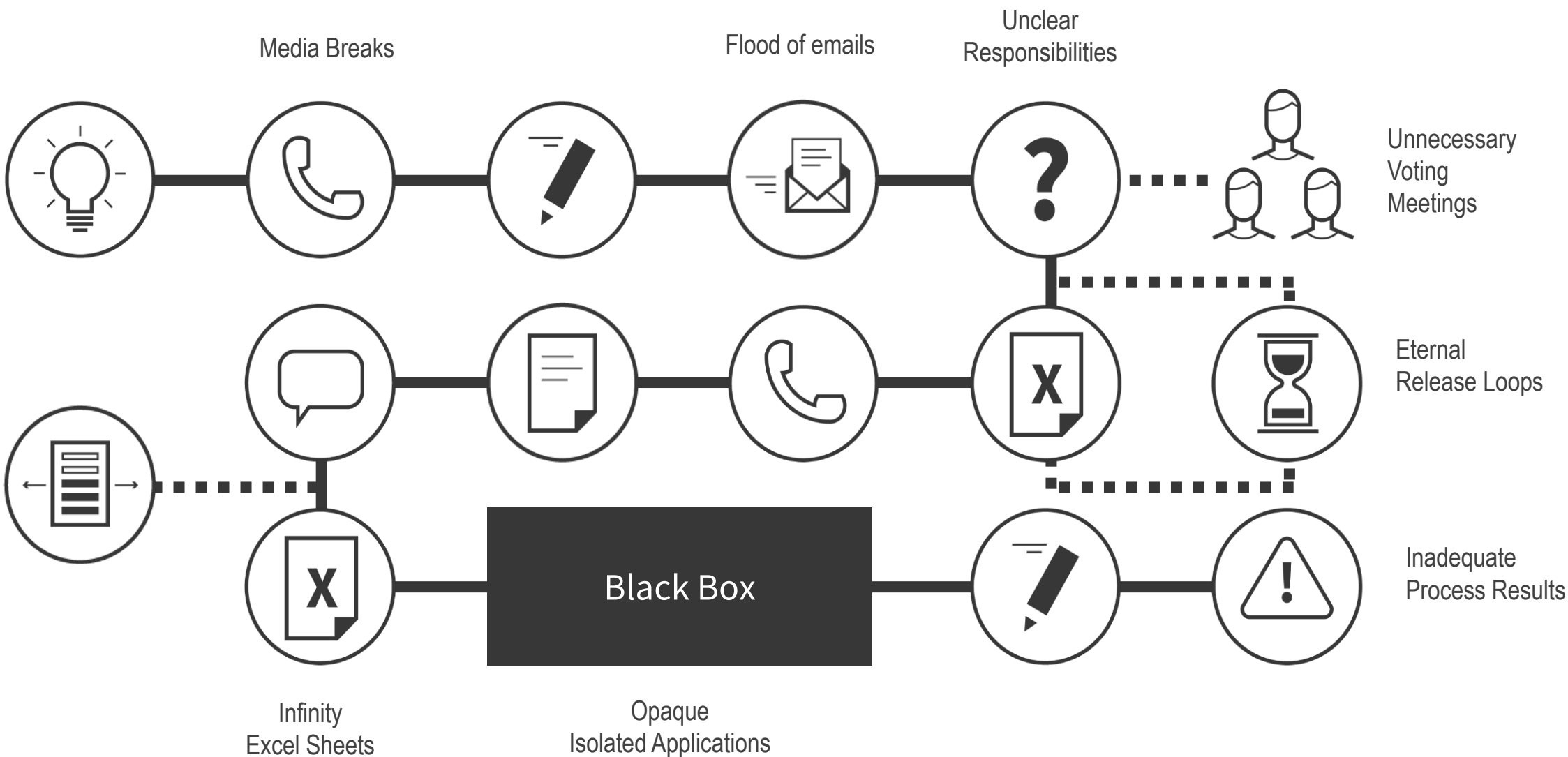

connect

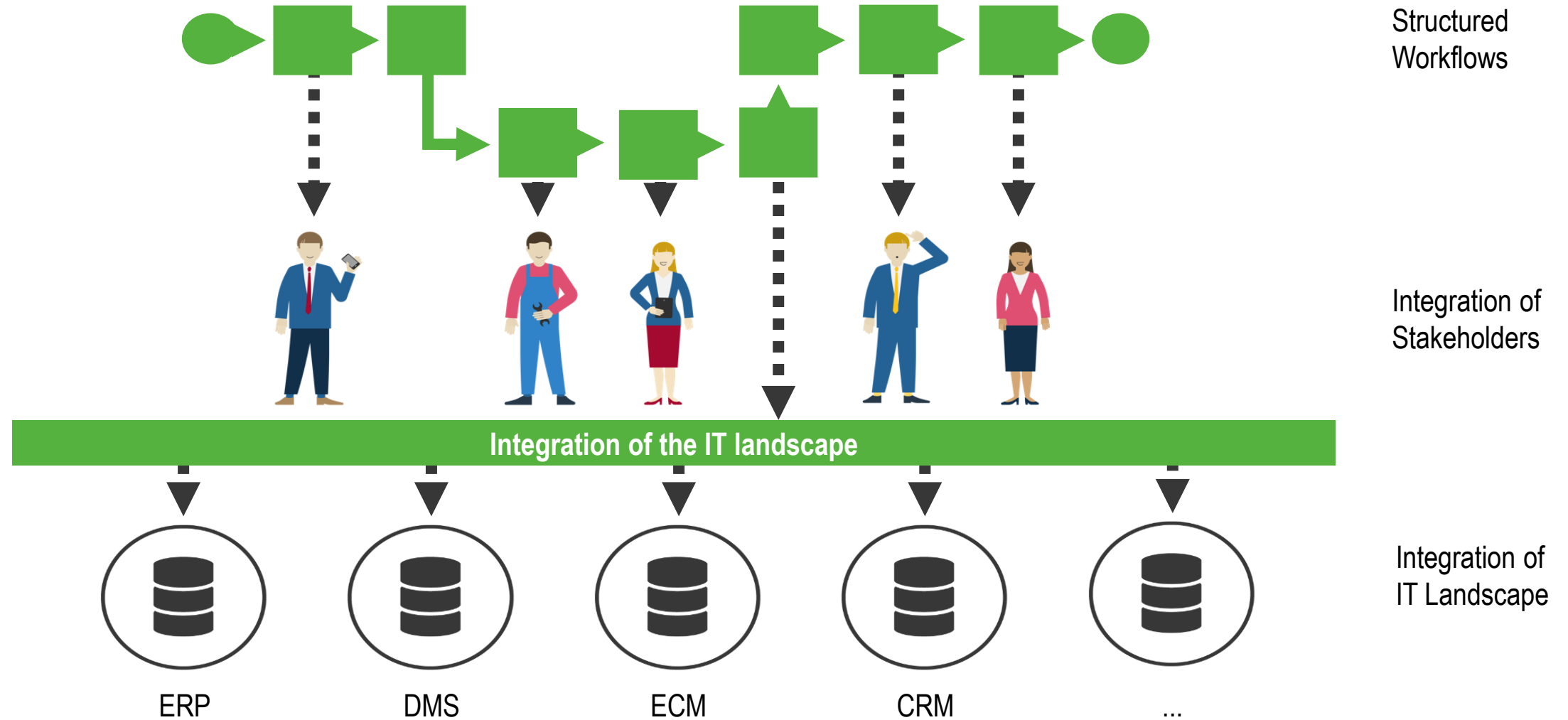

engage

Real



Without TIM: Typical Processes





A Concrete Implementation Success



Automation of the process for planning all special series and special request vehicles



Special Series and Special Request Vehicles

TIM reference numbers, using the example of a premium automobile manufacturer



Customer
since
2010

Return of Investment

Reached after the first
process run



360

Process participants



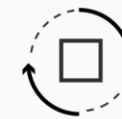
10

Days
to implement the
first process



5.500

Completed tasks
in the year



1.800

Process runs
in the year



Customer-centric, Collaborative Workflows

Using the example of a premium automobile manufacturer



Customer
since
2010

**Individually
standardized**



The screenshot displays the TIM web application interface. At the top, there is a search bar and a language selector set to 'Deutsch'. The main header shows 'Prozess starten > Special Request'. Below this, the 'Start: Special Request' section is visible, with tabs for 'Eigenschaften', 'Dokumente', 'Smartform', 'Vorlagen (0)', and 'Prozessmodell'. The 'Smartform' tab is active, showing a form for 'BMW Individual'. The form includes fields for 'Status' (set to 'open'), 'SRO-ID', 'Special paint' (radio button selected for 'Yes'), 'Special upholstery' (radio button selected for 'No'), 'Other' (radio button selected for 'Yes'), and 'Creation date'. At the bottom right, there are buttons for 'Vorlage erstellen' and 'Prozess'. The TIM logo is visible in the bottom left corner of the interface.



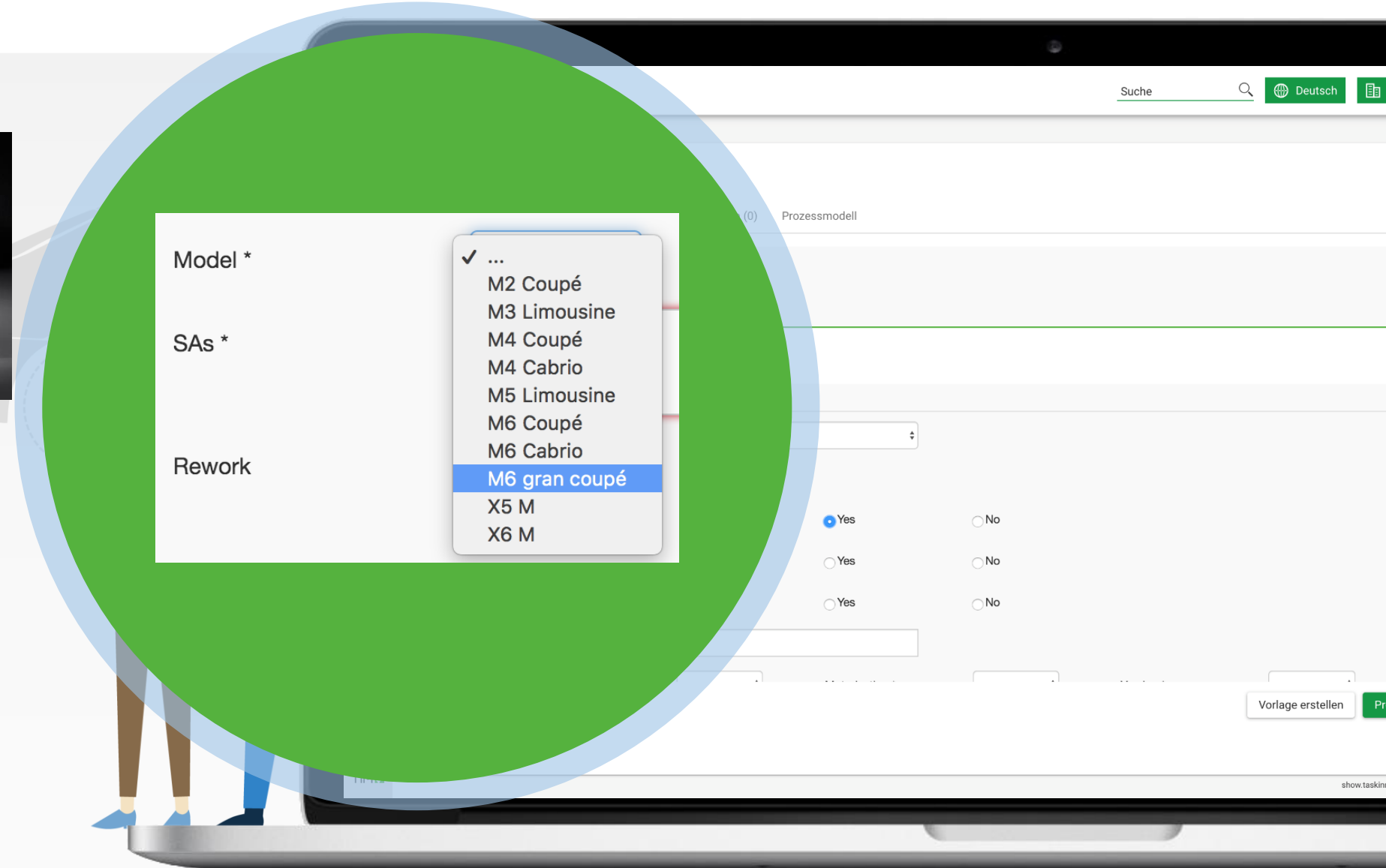
Customer-centric, Collaborative Workflows

Using the example of a premium automobile manufacturer



Customer
since
2010

**Individually
standardized**





Customer-centric, Collaborative Workflows

Using the example of a premium automobile manufacturer



Customer
since
2010

**Individually
standardized**

Motorisation *

- ✓ ...
- V16
- V12
- 323i
- 325i
- 325d
- 330i
- 330d
- 520i
- 520d
- 523i
- 525i
- 525d
- 530i
- 530d
- 535d
- 535i
- 540i
- 725d
- 730i
- 730d
- 735d
- 735i
- 740i
- 750i

☐ Yes

☒ Yes ☐ No

☐ Yes ☐ No

☐ Yes ☐ No

Suche

Deutsch

Vorlage erstellen

show tasking



Customer-centric, Collaborative Workflows

Using the example of a premium automobile manufacturer



Customer
since
2010

**Individually
standardized**





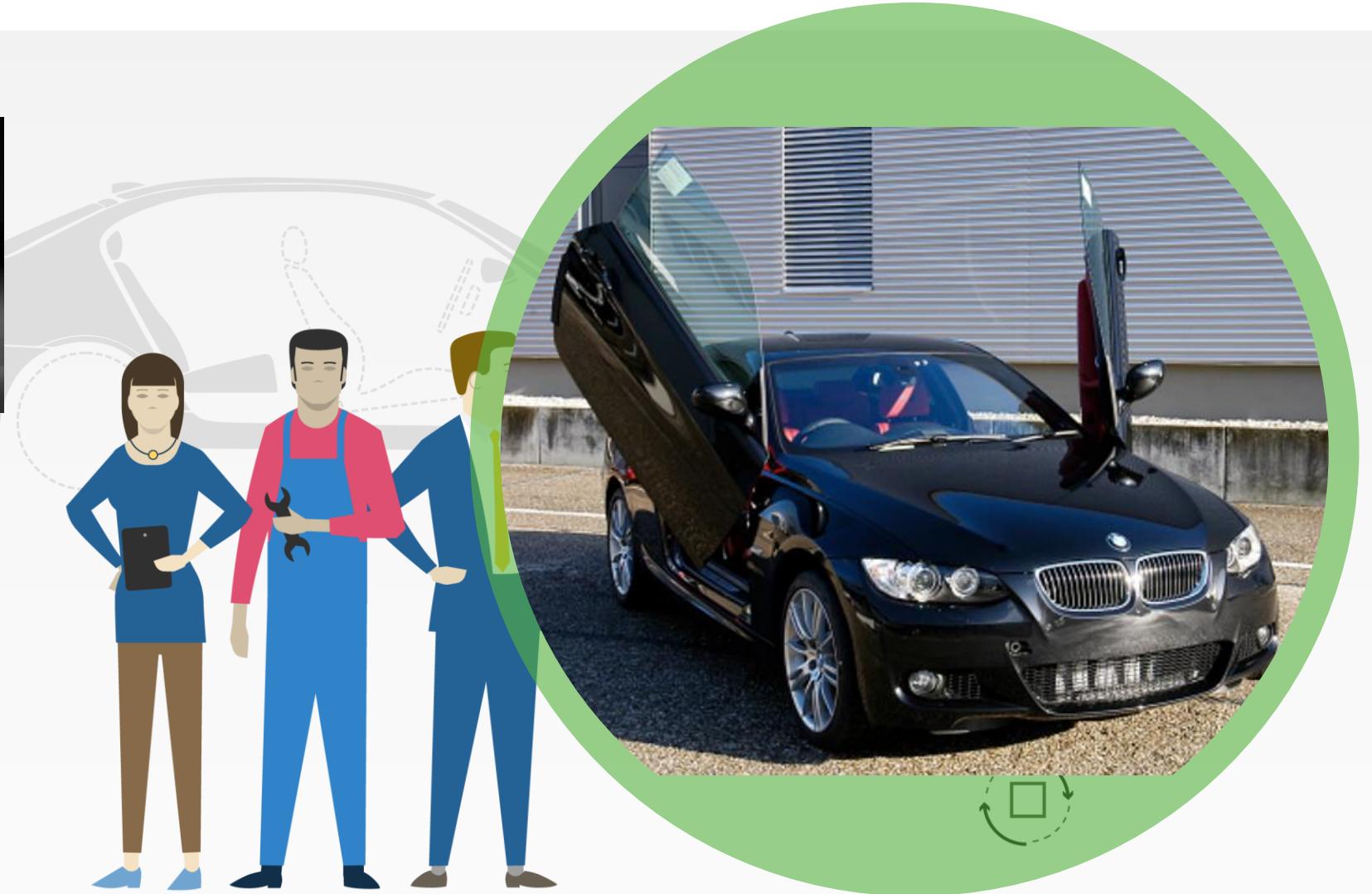
Customer-centric, Collaborative Workflows

Using the example of a premium automobile manufacturer



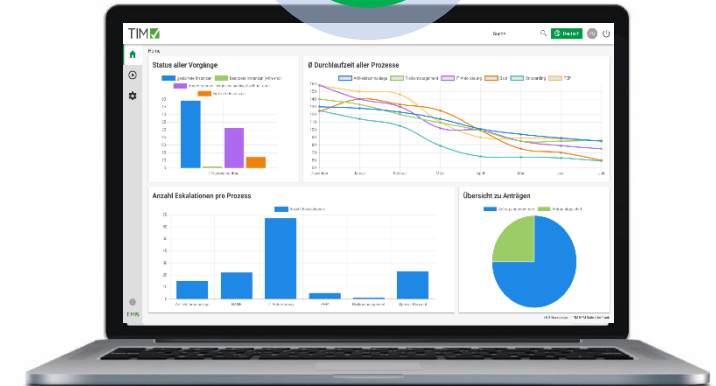
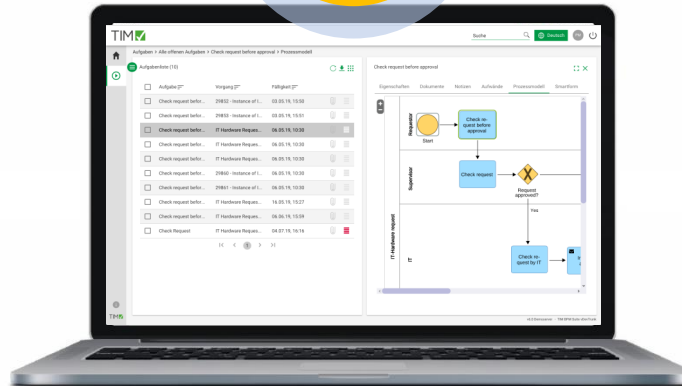
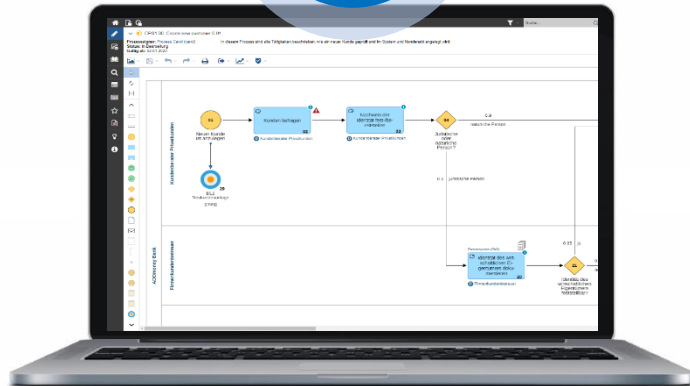
Customer
since
2010

**Individually
standardized**



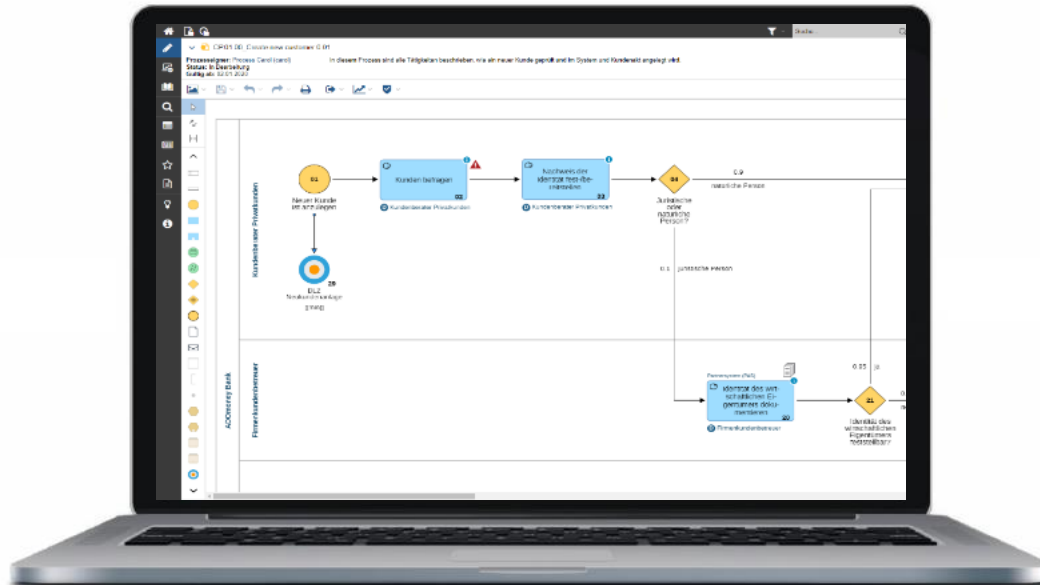
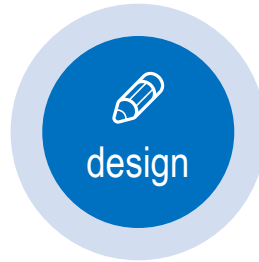
Collaborative Workflows – How to Implement Them.

ADONIS BPM and TIM Human Workflows: integrated, automated.



Automate Processes with ADONIS & TIM

Phase 1: Design

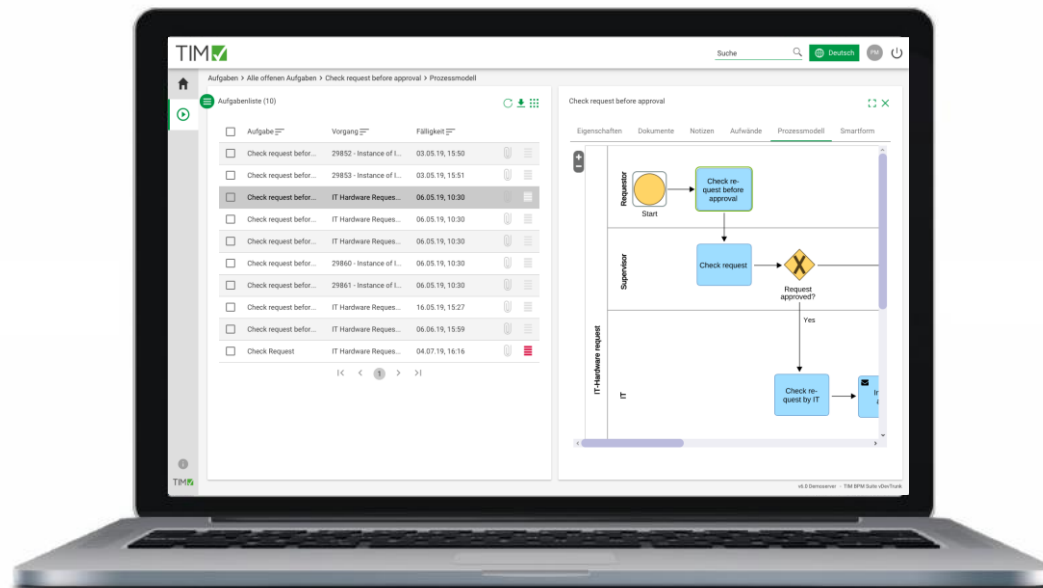


Design

- Process prioritization
- From the current to the target process
- Detailing the specialist process

Automate Processes with ADONIS & TIM

Phase 2: Connect

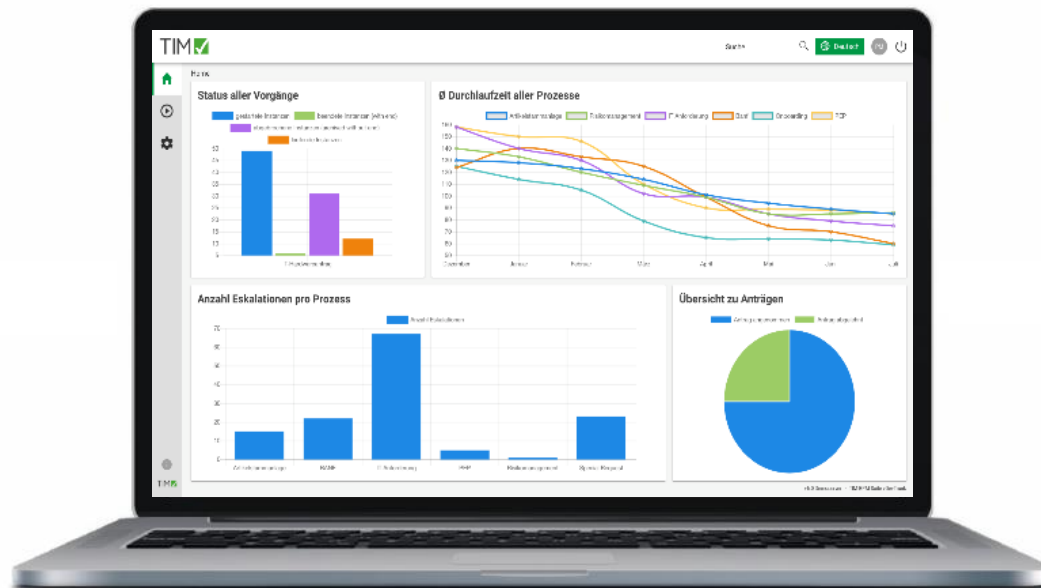


Automate

- Agile implementation and quick feedback
- Direct process execution
- Integration & scheduling

Automate Processes with ADONIS & TIM

Phase 3: Engage

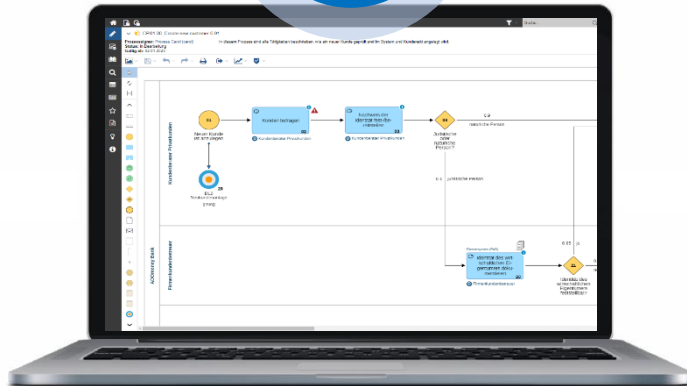


Optimize

- Monitoring – deviation analysis
- Professional & technical anchoring
- Controlling, control, deviation analysis

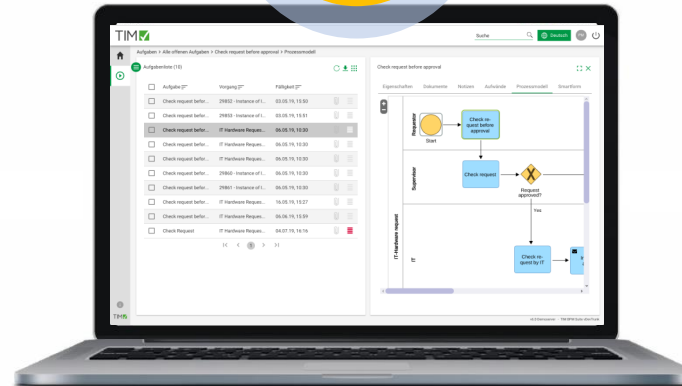
Integrated & Agily Automated

ADONIS BPM und TIM Human Workflows.



Design

- Process prioritization
- From the current to the target process
- Detailing the specialist process



Automate

- Agile implementation and quick feedback
- Direct process execution
- Integration & scheduling



Optimize

- Monitoring – deviation analysis
- Professional & technical anchoring
- Controlling, control, deviation analysis

Test ADONIS for free!

Register for our free Community Edition
www.boc-group.com/adonis/get-started

NEW TO ADONIS?

Contact Us

Turn your processes into
collaborative and digital workflows:
www.boc-group.com/en/contact-us/



ADONIS Process Automation

<https://knowledge.boc-group.com/en/module/adonis-process-automation/>

CONNECT WITH US!



Free Webinars and regional Events
Trending Topics in BPM, EA & GRC
Updates, News & Highlights
www.boc-group.com/newsletter