

ADONIS Process Manager / ADOIT Enterprise Architect for Confluence

Installation Manual

Version 7.2 - English



Table of Contents

1.	Overview	3
1.1	Installation	3
1.2	Where to get ADONIS Process Manager / ADOIT Enterprise Architect for Confluence	3
1.1.1	Installation package:	3
1.1.2	Marketplace:	4
2.	Enterprise Edition: Configuration of ADONIS NP / ADOIT	5
3.	Installation of the ADONIS Process Manager/ADOIT Enterprise Architect for Confluence app in Atlassian Confluence	8
3.1	Installation with an Installation package	8
3.2	Installation via the Atlassian Marketplace	9
4.	Configuration of the REST connection	10
4.1	Enterprise Edition: Configure a connection	10
4.2	Community Edition: Configure a connection	11
4.3	Enterprise Edition / Community Edition: Configure a connection	12
5.	How to disable unused macros	13
6.	Enterprise Edition: Additional setup for SSO scenarios	15
7.	Appendix	16
7.1	Enterprise Edition: Restricting access to ADONIS NP / ADOIT content	16
7.2	How to enable ADONIS Process Manager / ADOIT Enterprise Architect logging	16
7.3	How to enable the cache for model and object groups?	18
7.4	How is the cache for model and object groups working?	19
8.	Troubleshooting	20
8.1	Enterprise Edition: The class icons are missing from the macros	20
8.2	Enterprise Edition: How to solve SSL handshake: "sun.security.validator.ValidatorException: PKIX path building failed"	20
8.3	Enterprise Edition: The connection from ADONIS Process Manager/ADOIT Enterprise Architect prompts for authentication	21
8.4	Enterprise Edition: The macros using the metamodel are not working after enabling the metamodel REST APIs in the Admin Toolkit	21

1. Overview

This document describes the installation of the *ADONIS Process Manager / ADOIT Enterprise Architect for Confluence* apps for *Atlassian Confluence* as well as the setup and configuration for connecting them to an *ADONIS NP* and/or *ADOIT Enterprise* installation or an *ADONIS* and/or *ADOIT Community Edition* account.

The *ADONIS Process Manager / ADOIT Enterprise Architect for Confluence* apps can be obtained from **Installation packages** containing OBR files for upload to Confluence, or via a download from the **Atlassian Marketplace** ([ADONIS Process Manager](#) / [ADOIT Enterprise Architect](#)).

1.1 Installation

The installation consists of the following main steps:

Enterprise Edition:

1. Configuration and preparation of *ADONIS NP* and/or *ADOIT*.
2. Installation of the *ADONIS Process Manager/ADOIT Enterprise Architect for Confluence* app in *Atlassian Confluence* using the provided OBR files, or via download from the *Atlassian Marketplace* (<https://marketplace.atlassian.com/>).
3. Configuration of the REST connection from *ADONIS Process Manager/ADOIT Enterprise Architect for Confluence* to *ADONIS NP* and/or *ADOIT*.

Community Edition:

1. Installation of the *ADONIS Process Manager/ADOIT Enterprise Architect for Confluence* app in *Atlassian Confluence* using the provided OBR files, or via download from the *Atlassian Marketplace* (<https://marketplace.atlassian.com/>).
2. Connection of the *ADONIS Process Manager/ADOIT Enterprise Architect for Confluence* with an *ADONIS:CE / ADOIT:CE* account

1.2 Where to get *ADONIS Process Manager / ADOIT Enterprise Architect for Confluence*

1.1.1 Installation package:

The installation package contains the following items:

- **confluence:** this folder contains the *ADONIS Process Manager / ADOIT Enterprise Architect for Confluence* apps for *Atlassian Confluence*.

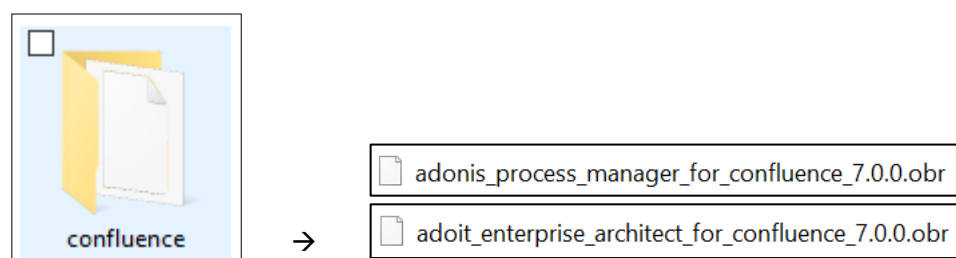


Figure 1: The installation package

(Note that, the actual names of the OBR files might differ from the image above)

1.1.2 Marketplace:

The ADONIS Process Manager / ADOIT Enterprise Architect for Confluence apps can be found in the Atlassian Marketplace and from there downloaded and installed directly to your Confluence instance.



Figure 2: Atlassian Marketplace: ADONIS Process Manager for Confluence

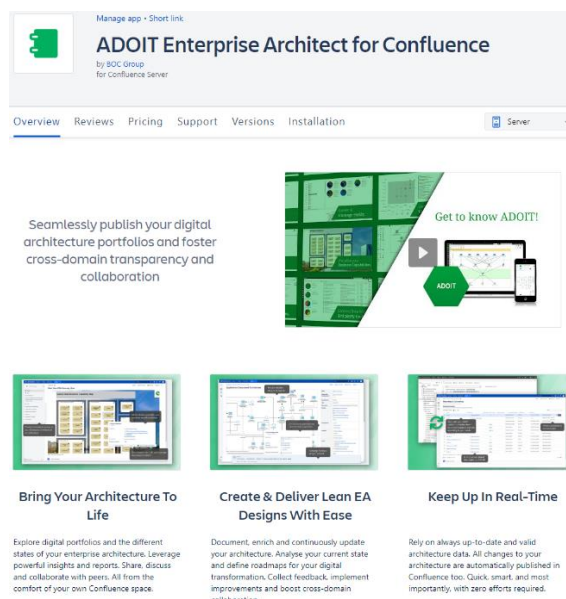


Figure 3: Atlassian Marketplace: ADOIT Enterprise Architect for Confluence

2. Enterprise Edition: Configuration of ADONIS NP / ADOIT

NOTE: *In order to use ADONIS Process Manager / ADOIT Enterprise Architect for Confluence with your ADONIS NP / ADOIT Enterprise Edition, the Standard RESTful services module must be licensed and enabled!*

1. Open the **Administration Toolkit**.
2. Go to the **Library Management** component and then to the **Component Settings** tab.
3. Go to **Standard RESTful services → General**.
 - Enable MFB REST globally.
 - In the **Tokens** tab configure the **Settings of the local REST security context** by adding a **Key** and generating a **Secret** (this can be done automatically by the **Generate Secret** button).
 - In the **Technical user** setting, select a technical user for the REST context. Available technical users are displayed in the table.
If no user is available, go to **User Management** and create a technical user (this user must have **Trusted Login**).
You can assign one or more repository to the chosen technical user and therefore selecting what content should be available within REST.
NOTE: All content that the technical user has access to, will also be available via the ADONIS Process Manager/ADOIT Enterprise Architect macros in Confluence for all Confluence users.
For further information, please see chapter 7.1 “Enterprise Edition: Restricting access to ADONIS NP / ADOIT content”.
 - The following **REST Scenarios** must be enabled for ADONIS Process Manager/ADOIT Enterprise Architect for Confluence to work:
 - **Repository read APIs**
 - **Repository search APIs**
 - **Metamodel read APIs**
 - [Optional] In the **Cache Path** setting, setup an absolute path on the webserver machine, accessible by ADONIS NP, where REST cache can be saved. The path should be dedicated to this purpose and not shared with other services. ADONIS NP will take care of managing it. Doing so will improve the response time for REST.
Please note: if it is a SaaS ADONIS NP / ADOIT environment hosted by BOC Group then the **Cache Path** setting change must be requested from the **Key Account Manager**.

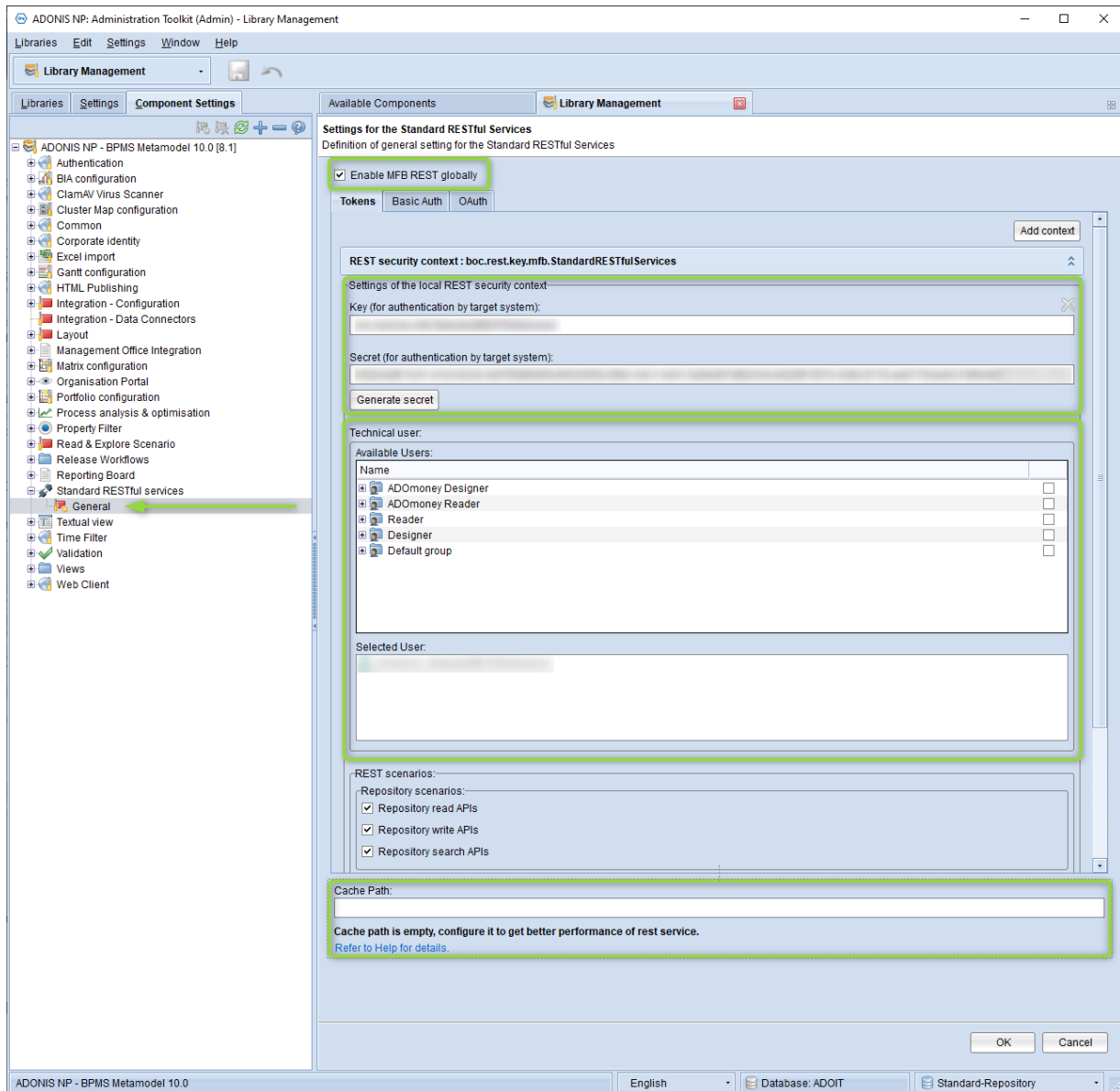


Figure 4: Standard RESTful services settings

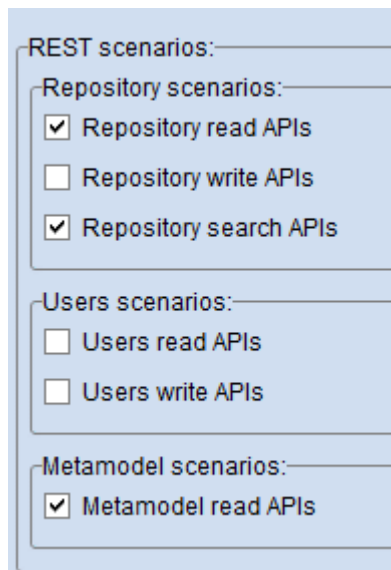


Figure 5: REST scenarios to enable

4. Go to **Web Client → System** page.

- Configure the **Base URL** to match the web client URL.
- In **Technical Users**, select the same technical user from the previous step.

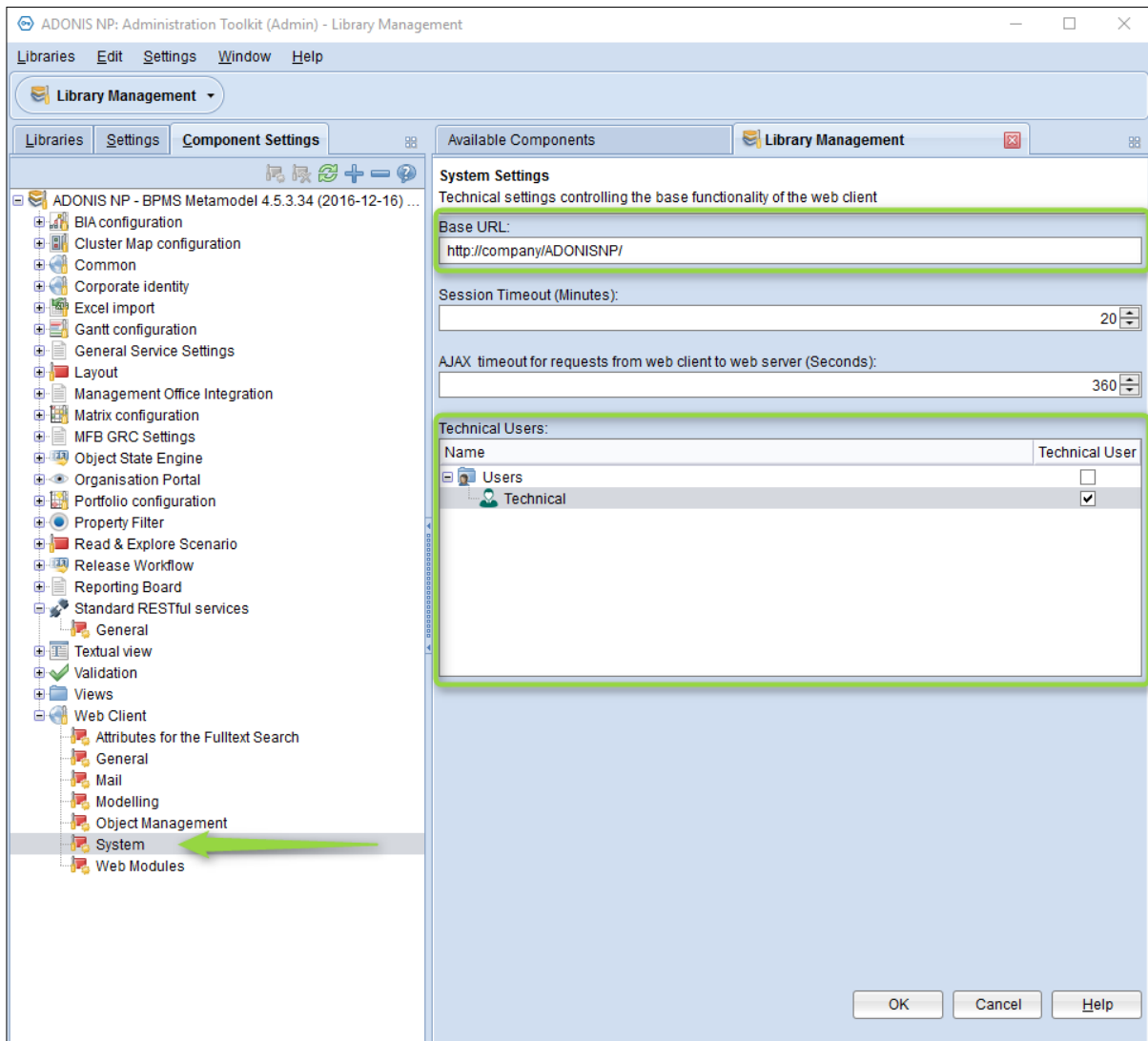


Figure 6: Web Client System settings

3. Installation of the ADONIS Process Manager/ADOIT Enterprise Architect for Confluence app in Atlassian Confluence

This chapter describes the steps to install the **ADONIS Process Manager/ADOIT Enterprise Architect for Confluence** apps in Atlassian Confluence.

3.1 Installation with an Installation package

Before installing the app, make sure that the distribution file from the installation package 'adonis_process_manager_for_confluence.obr' / 'adoit_enterprise_architect_for_confluence.obr' is accessible from your computer, either at via the file system or via an URL.

Steps to manually upload the ADONIS Process Manager/ADOIT Enterprise Architect for Confluence apps in Confluence:

1. From the General configuration page of the Confluence administration, click *Manage apps* in the left sidebar.
2. Click the Upload app link at the top right side of the page. The following dialog appears:

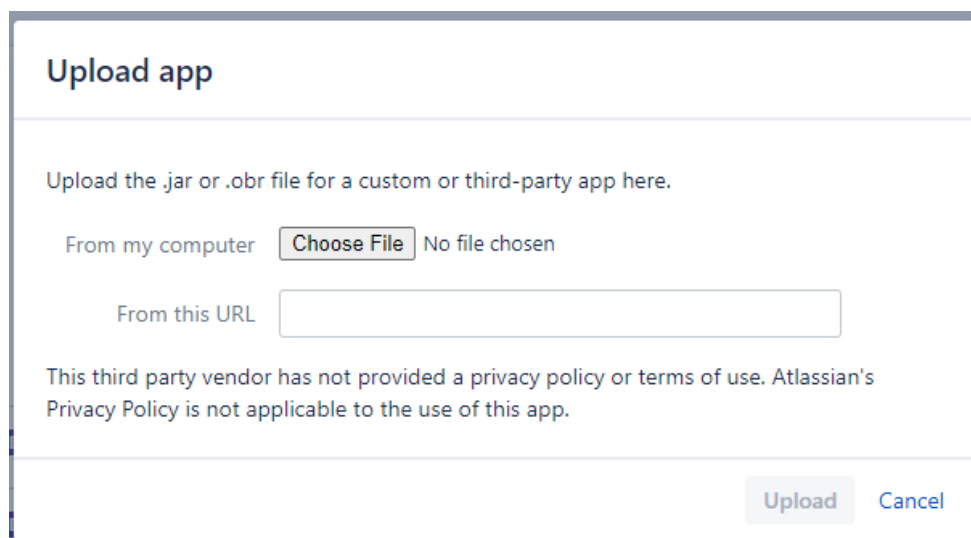


Figure 7: Upload an app in Confluence

3. Enter the location of the JAR or OBR file to upload using the file chooser or by specifying a network location by entering a URL. In this case you want to select the 'adonis_process_manager_for_confluence.obr' / 'adoit_enterprise_architect_for_confluence.obr' file.
4. **Click Upload.**

A confirmation message appears when the app is successfully installed.

5. If prompted, restart your application to have your change take effect.

You can now manage the app from the user-installed app list on the Manage apps page.

The ADONIS Process Manager/ADOIT Enterprise Architect for Confluence configuration page can be reached from the Admin Configuration or by the Manage apps page.

3.2 Installation via the Atlassian Marketplace

1. From the General configuration page of the Confluence administration, click *Find New Apps* in the left sidebar.
2. In the search field enter **ADONIS Process Manager for Confluence** or **ADOIT Enterprise Architect for Confluence**.
3. On the right of the ADONIS Process Manager / ADOIT Enterprise Architect for Confluence marketplace entry, select *Buy now*.
4. Proceed as suggested by the Atlassian Marketplace dialogs.

4. Configuration of the REST connection

Once the ADONIS Process Manager/ADOIT Enterprise Architect for Confluence app has been installed in Confluence, the connection settings to ADONIS NP and/or ADOIT must be configured:

- In Confluence, go to **General Configuration**
- Navigate to **ADONIS Process Manager / ADOIT Enterprise Architect Configuration**
- Select your edition (Enterprise Edition or Community Edition)
- Change the configuration for the product (see Figure 9 and Figure 10, and descriptions below) and hit **Save**

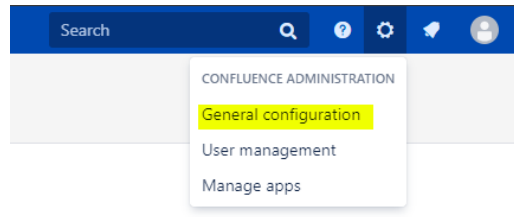


Figure 8: Confluence General configuration

4.1 Enterprise Edition: Configure a connection

The following settings must be configured to establish a connection to ADONIS NP/ADOIT Enterprise Edition:

Web Client URL	<p>The URL that you normally use to access the BOC Product.</p> <p><u>When using Single-Sign On (SSO) with ADONIS NP/ADOIT:</u></p> <p>If an authentication server such as IIS is used to handle SSO between the client (typically the web browser) and ADONIS NP/ADOIT, you need to take additional steps to successfully establish a connection between the two systems. See Additional setup for SSO scenarios further details.</p> <p>The Web Client URL must also be set in the Confluence Allowlist Configuration to allow REST connections to your ADONIS NP/ADOIT instances!</p>
REST Identifier	The identifier provided for authentication (configured in the Admin Toolkit)
REST Secret Key	The secret key provided for authentication (configured in the Admin Toolkit)
Use cache for artefact groups	<p>Improves performance for large repositories. This is optional and disabled by default.</p> <p>For more information, see chapter 7.4 "How is the cache for modelgroups working?"</p>
Languages	<p>Defines the available languages for the Macros and Metamodel data.</p> <p>Only languages, that are supported by your ADONIS/ADOIT license must be entered here.</p>
HTTP Pool size	The maximum amount of parallel http threads used by the app.
HTTP Pool threshold	The threshold for the amount of http threads. If this number is reached by the connection pool, the requests will be dropped.

4.2 Community Edition: Configure a connection

The following settings must be configured to establish a connection to ADONIS:CE / ADOIT:CE:

Username	Your ADONIS:CE / ADOIT:CE account username.
Password	Your ADONIS:CE / ADOIT:CE account password.
Use cache for artefact groups	Improves performance for large repositories. This is optional and disabled by default. For more information, see chapter 7.4 " How is the cache for modelgroups working? "
Languages	Defines the available languages for the Macros and Metamodel data. Only languages, that are supported by your ADONIS/ADOIT license must be entered here.
HTTP Pool size	The maximum amount of parallel http threads used by the app.
HTTP Pool threshold	The threshold for the amount of http threads. If this number is reached by the connection pool, the requests will be dropped.

The Community Edition URL (<https://ce-api.boc-cloud.com/>) must be set in the Confluence Allowlist Configuration to allow REST connections to your ADONIS NP/ADOIT instances!

The screenshot shows the Confluence administration interface. The left sidebar contains a navigation menu with categories like CONFIGURATION, ATLASIAN MARKETPLACE, and USERS & SECURITY. The main content area is titled 'ADONIS Process Manager Configuration'. It includes a description of the app, a section for choosing the edition (Community or Enterprise), and a section for setting up the connection. The 'Setup Connection' section contains fields for ADONIS Web URL, REST Identifier, REST Secret Key, and a checkbox for using the cache. It also has a 'Languages' field with 'en,de' entered. At the bottom, there are buttons for 'Save', 'Test Connection', 'Build Cache', 'Reinitialize', and 'Clear configuration'. A note at the bottom states that by connecting to the Enterprise Edition, the user agrees to the privacy policy.

ADONIS Process Manager Configuration

This is the ADONIS Process Manager configuration. This app allows you to publish contents from your ADONIS to your Confluence instance.

1. Choose Edition

You can choose between the following editions:

- Community Edition: configure ADONIS Process Manager for your free ADONIS Community Edition account. If you do not have an account, you can register a [new account now](#).
- Enterprise Edition: configure ADONIS Process Manager for your ADONIS Enterprise Edition instance (On-Premise / SaaS).

Edition: **Enterprise Edition**

2. Setup Connection

The following configuration includes:

- ADONIS Web URL: the URL that you normally use to access the ADONIS Web Client.
- ADONIS REST Identifier: the REST key for the authentication that is configured in the ADONIS Administration Toolkit.
- ADONIS REST Secret Key: the REST secret for the authentication that is configured in the ADONIS Administration Toolkit.
- Use cache for artefact groups: whether or not the model and object groups should be cached on Confluence. Enable this for large ADONIS repositories to get better response times.
- Languages: comma-separated list of ISO 639-1 codes that specifies the ADONIS content languages that will be made available in Confluence (e.g. "en,de"). This is specific to your ADONIS license.

Please note: When connecting ADONIS to your Confluence instance, all content that the technical user in ADONIS has access to is also being made available to all Confluence users. If you are uncertain about this step, please refer to the ADONIS Process Manager installation manual and contact the application owner of ADONIS in your company.

ADONIS Web URL:

ADONIS REST Identifier:

ADONIS REST Secret Key:

Use cache for artefact groups: ☐

Languages:

By connecting to your Enterprise Edition you agree to our [privacy policy](#).

Figure 9: Enterprise Edition: ADONIS Process Manager for Confluence Configuration

Confluence administration

ADONIS Process Manager Configuration

This is the ADONIS Process Manager configuration. This app allows you to publish contents from your ADONIS to your Confluence instance.

1. Choose Edition

You can choose between the following editions:

- Community Edition: configure ADONIS Process Manager for your free ADONIS Community Edition account. If you do not have an account, you can register a new account now.
- Enterprise Edition: configure ADONIS Process Manager for your ADONIS Enterprise Edition instance (On-Premise / SaaS).

Edition: **Community Edition**

2. Setup Connection

The following configuration includes:

- Username & Password: provide the credentials for your ADONIS Community Edition account.
- Use cache for artefact groups: whether or not the model and object trees should be cached on Confluence. Enable this for large repositories to get better response times.

Please note: When connecting your ADONIS Community Edition account to your Confluence instance, all content of that account is being made available to all Confluence users. If you are uncertain about this step, please refer to the [ADONIS Process Manager installation manual](#). You can also switch to the ADONIS Enterprise Edition, which allows you to limit the content that can be accessed.

Username:

Password:

[Register free Account](#) [Forgot your password?](#)

☐ Use cache for artefact groups:

By logging in you agree to our [privacy policy](#).

Figure 10:Community Edition: ADONIS Process Manager for Confluence Configuration

4.3 Enterprise Edition / Community Edition: Configure a connection

The following buttons are available on the configuration page:

Save	Saves the current configuration.
Test Connection	Tests the connection to the configured instance of ADONIS NP/ADOIT Important: The configuration must be saved before the connection can be tested.
Build Cache	Builds up the ADONIS NP/ADOIT model caches for the REST interface.
Reinitialize	Triggers the re-initialization to update the following components: <ul style="list-style-type: none"> Cache for model and object groups: This retrieves the current state of the model and object groups from ADONIS NP/ADOIT and caches them. The Metamodel: The metamodel data of ADONIS NP/ADOIT. If an update of the metamodel has been done on ADONIS NP/ADOIT, the reinitialization ensure that the latest version is used. If the metamodel REST API has been enabled after starting Confluence and setting up ADONIS Process Manager/ADOIT Enterprise Architect for Confluence, the reinitialization must be executed.
Clear configuration	Clears the current configuration, effectively disconnecting ADONIS Process Manager/ADOIT Enterprise Architect for Confluence to ADONIS NP/ADOIT. Please note, that to completely disable ADONIS Process Manager/ADOIT Enterprise Architect for a given product, the section How to disable unused macros describes how to do it.

5. How to disable unused macros

In case you want to exclude specific macros of the ADONIS Process Manager/ADOIT Enterprise Architect for Confluence from usage, you can disable them in the Manage Apps view.

Steps to disable a macro

1. Navigate to the "Confluence Administration" and to "Manage Apps".
2. Expand "ADONIS Process Manager/ADOIT Enterprise Architect for Confluence" and the list of modules.
3. There are many different modules listed. It is important to only disable modules that are listed in the table below, otherwise the functionality of ADONIS Process Manager/ADOIT Enterprise Architect will not work anymore.

The screenshot shows the 'ADONIS Process Manager for Confluence' interface. At the top, there's a header with the app name and a 'Free trial' button. Below the header, a message states 'Seamlessly publish your organizational processes and foster enterprise-wide transparency and collaboration.' and 'Try ADONIS Process Manager for Confluence free for 30 days.' Below this are buttons for 'Free trial', 'Buy now', 'Configure', and 'Disable'. The main content area is divided into three sections: 'Loading screenshots...', 'Version: 7.0.0', 'Vendor: BOC Group', 'App key: com.boc.confluence.plugin.ado', 'License details: Unlicensed', and 'License key:'. To the right of these details, it says '57 of 57 modules enabled'. Below this, there's a table listing various modules with their IDs and a 'Disable' button next to the 'ADONIS Query Table' module.

Module Name	Module ID	Action
ADONIS Properties Macro Settings	(adonis-spacesettings)	
ADONIS: Generic Web Resources	(adonis-resources)	
ADONIS Query Table	(adonis-table-macro)	Disable
ADONIS: TableMacro Web Resources	(adonis-table-resources)	
ADONIS Search	(adonis-search-macro)	
ADONIS: SearchMacro Web Resources	(adonis-search-resources)	
ADONIS Model List	(adonis-modellist-macro)	
ADONIS: ModelListMacro Web Resources	(adonis-modellist-resources)	
ADONIS Model Search	(adonis-model-search-macro)	

Figure 11: ADONIS Process Manager for Confluence modules

For Enterprise Edition users: Please be aware, that **disabling macros does not prevent access** to any data. Even with all macros disabled, a user can still access all data of the Technical User via the REST API through Confluence.

Therefore, it is important to understand, that any **restrictions to access data from ADONIS or ADOIT must be applied via the access rights of the Technical User.**

This table contains what modules should be disabled to disable a specific ADONIS Process Manager / ADOIT Enterprise Architect macro:

ADONIS Model Image	adonis-model-image-macro
ADONIS Model Viewer	adonis-model-viewer-macro
ADONIS Model Search	adonis-model-search-macro
ADONIS Model List	adonis-modellist-macro
ADONIS Object & Model Properties	adonis-header-macro adonis-space-admin-header-resources space-admin-adonis-header space-admin-adonis-header-2 adonis-header-plugin-space-admin-action adonisspacesettings
ADONIS Query Table	adonis-table-macro
ADONIS Search	adonis-search-macro
ADONIS Chart	adonis-workbench-macro
ADOIT Model Image	adoit-model-image-macro
ADOIT Model Viewer	adoit-model-viewer-macro
ADOIT Model Search	adoit-model-search-macro
ADOIT Model List	adoit-modellist-macro
ADOIT Object & Model Properties	adoit-header-macro adoit-space-admin-header-resources space-admin-adoit-header space-admin-adoit-header-2 adoit-header-plugin-space-admin-action adoitspacesettings
ADOIT Query Table	adoit-table-macro
ADOIT Search	adoit-search-macro
ADOIT Chart	adoit-workbench-macro

6. Enterprise Edition: Additional setup for SSO scenarios

In case SSO is being used for user authentication, the following URL patterns must be whitelisted and passed through the ADONIS NP/ADOIT web application, without requiring user authentication:

If the base URL for ADONIS NP/ADOIT is:

- <https://ado.your-company.com/>

Then the URL patterns to whitelist are:

- <https://ado.your-company.com/rest>

including all the sub paths (e.g. to include <https://ado.your-company.com/rest/connection>).

Alternatively, a direct connection to ADONIS NP/ADOIT can be configured.

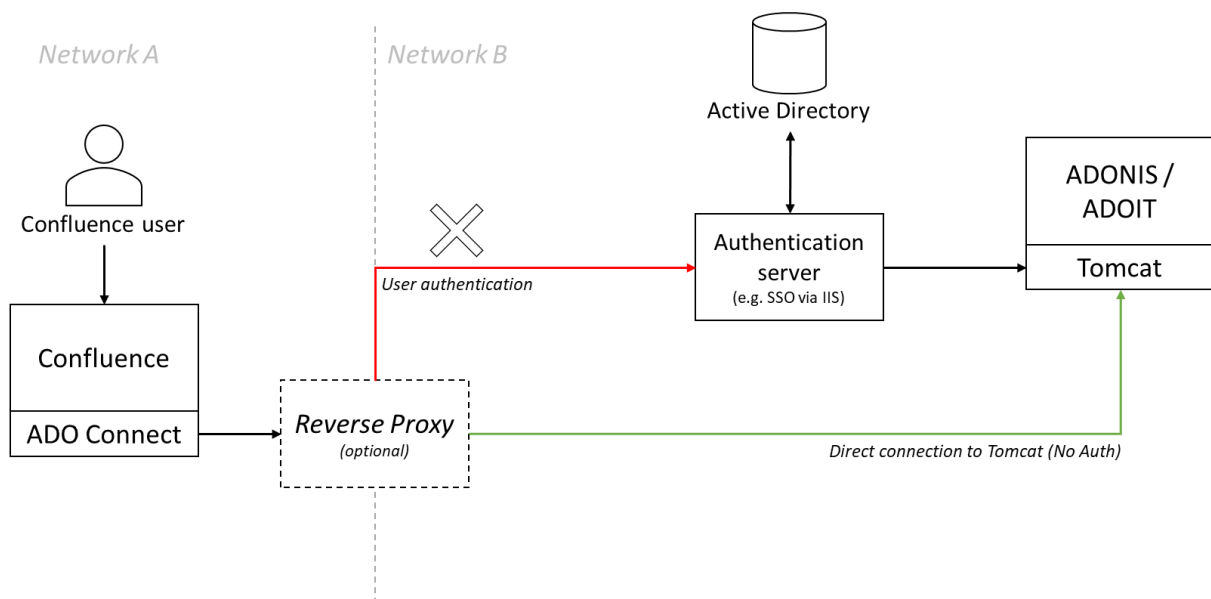


Figure 12: SSO setup

7. Appendix

7.1 Enterprise Edition: Restricting access to ADONIS NP / ADOIT content

Please be aware, that from within Confluence itself, you cannot effectively restrict access to any data of ADONIS NP or ADOIT, by using typical Confluence mechanisms alone, such as:

- Confluence space permissions
- Page restrictions
- Disabling macros
- etc.

This is due to the fact, that any Confluence user who can edit a page (e.g. in his personal space) can always include an ADONIS Process Manager/ADOIT Enterprise Architect macro and browse the objects & models in the repository (e.g. via the macro editor). Even if the user would not have any edit rights at all, ADONIS Process Manager/ADOIT Enterprise Architect continues to act as a proxy for authenticated Confluence users to the ADONIS NP/ADOIT REST interface, which still allows access to a limited set of APIs, that are needed for the macros to work.

Therefore, the proper way to limit access to ADONIS NP/ADOIT content, is to use the technical user configured in ADONIS NP/ADOIT for ADONIS Process Manager/ADOIT Enterprise Architect to restrict access (see chapter 2 "Enterprise Edition: Enterprise Edition: Configuration of ADONIS NP / ADOIT"). Any requests from ADONIS Process Manager/ADOIT Enterprise Architect are processed by ADONIS NP/ADOIT within the context of this technical user. As such, the full power of the permission system within ADONIS NP and ADOIT can be used to control, what data will be available in Confluence and what data should not be accessible.

This includes, restricting access to:

- individual objects and models or entire object- & model-groups
- to object types and model types (e.g. all processes, all documents, all applications, ...)
- individual attributes & relations (globally or for a specific object-/model-type)
- based on object-/model-lifecycle state (e.g. only released processes or applications; only available in combination with a release workflow)

7.2 How to enable ADONIS Process Manager / ADOIT Enterprise Architect logging

By default, every Confluence plugin is configured to log *WARN* and *ERROR* levels.

To get more information about ADONIS Process Manager/ADOIT Enterprise Architect, enable the *INFO* log as described:

- In Confluence, go to **General Configuration**
- Navigate to **Logging and Profiling**
- Enter a new log entry `com.boc.confluence.plugin` and select *INFO* as logging level:

Confluence
Spaces
People
Create
...
Search

Confluence administration

- CONFIGURATION
- General Configuration
- Further Configuration
- Backup Administration
- Manage Referrers
- Languages
- Shortcut Links
- External Gadgets
- Global Templates and Blueprints
- Import Templates
- Recommended Updates
- Email
- Mail Servers
- User Macros
- In-app Notifications
- Hipchat Integration
- Attachment Storage
- Spam Prevention
- PDF Export Language Support
- Configure Code Macro
- Office Connector
- COIS Service Configuration
- WebDAV Configuration
- ATLASSIAN MARKETPLACE
- Find new apps

Logging and Profiling 1

Performance Profiling
Profiling is currently OFF.
[Enable Profiling](#)

SQL Logging
[Enable SQL Logging](#)

Log4j Logging
Log level is currently Production.
[Production](#) [Diagnostic](#)

OR:
Customize specific logging settings

Add New Entry

Class/Package Name	New Level
com.boc.confluence.plugin 2	INFO 3 Add entry 4

Existing Levels

Class/Package Name	Current Level	New Level
atlassian-monitor	INFO	INFO Remove
atlassian.plugin	INFO	INFO Remove
com.atlassian.bonnie	INFO	INFO Remove
com.atlassian.confluence.admin.actions	INFO	INFO Remove
com.atlassian.confluence.admin.actions.SystemInfoOnStartup	INFO	INFO Remove
com.atlassian.confluence.cache.DefaultCacheConfigManager	INFO	INFO Remove
com.atlassian.confluence.cache.DefaultCacheSettingsManager	INFO	INFO Remove

Figure 13:Logging and Profiling

Additionally, *DEBUG* level can be used to further diagnostic issues, especially if requested from the BOC Hotline.

7.3 How to enable the cache for model and object groups?

To enable the cache for model and object groups:

- In Confluence, go to **General Configuration**
- Navigate to **ADONIS Process Manager/ADOIT Enterprise Architect Configuration**
- Toggle the check box “Use cache for artefactgroups”
- Press Reinitialize to initialize the cache

CONFIGURATION

General Configuration

Further Configuration

Backup Administration

Languages

Shortcut Links

External Gadgets

Global Templates and Blueprints

Recommended Updates Email

Mail Servers

User Macros

In-app Notifications

Spam Prevention

PDF Export Language Support

Configure Code Macro

Office Connector

WebDAV Configuration

ADONIS Process Manager Configuration

Webhooks

ATLASSIAN MARKETPLACE

Find new apps

Manage apps

OSGi

USERS & SECURITY

Users

Groups

ADONIS Process Manager Configuration

This is the *ADONIS Process Manager* configuration. This app allows you to publish contents from your *ADONIS*

1. Choose Edition

You can choose between the following editions:

- Community Edition: configure *ADONIS Process Manager* for your free *ADONIS Community Edition* account
- Enterprise Edition: configure *ADONIS Process Manager* for your *ADONIS Enterprise Edition* instance (Or

Edition Enterprise Edition

2. Setup Connection

The following configuration includes:

- ADONIS Web URL: the URL that you normally use to access the *ADONIS Web Client*.
- ADONIS REST Identifier: the REST key for the authentication that is configured in the *ADONIS Admin*.
- ADONIS REST Secret Key: the REST secret for the authentication that is configured in the *ADONIS Admin*.
- Use cache for artefact groups: whether or not the model and object groups should be cached on Confluence.
- Languages: comma-separated list of ISO 639-1 codes that specifies the *ADONIS* content languages that should be published.

Please note: When connecting *ADONIS* to your *Confluence* instance, all content that the technical user in *AL* will be published to your *Confluence* instance. If you are uncertain about this step, please refer to the [ADONIS Process Manager installation manual](#) and [confluence integration manual](#).

ADONIS Web URL:

ADONIS REST Identifier:

ADONIS REST Secret Key:

Use cache for artefactgroups: ☒ **1**

Languages:

Save Test Connection Build Cache Reinitialize Clear configuration

By connecting to your Enterprise Edition you agree to our [privacy policy](#). **3**

Figure 14: ADONIS Process Manager for Confluence Configuration (Enable cache)

7.4 How is the cache for model and object groups working?

If the use cache for model and object groups setting is enabled, an in-memory cache of the group data of ADONIS/ADOIT is created in Confluence. What this means is that editing macros, as well as the *Model Search*, *Model List*, and *Object & Model Properties* macros, are faster.

Additionally, when editing macros, it is now possible to reload a specific sub-tree:

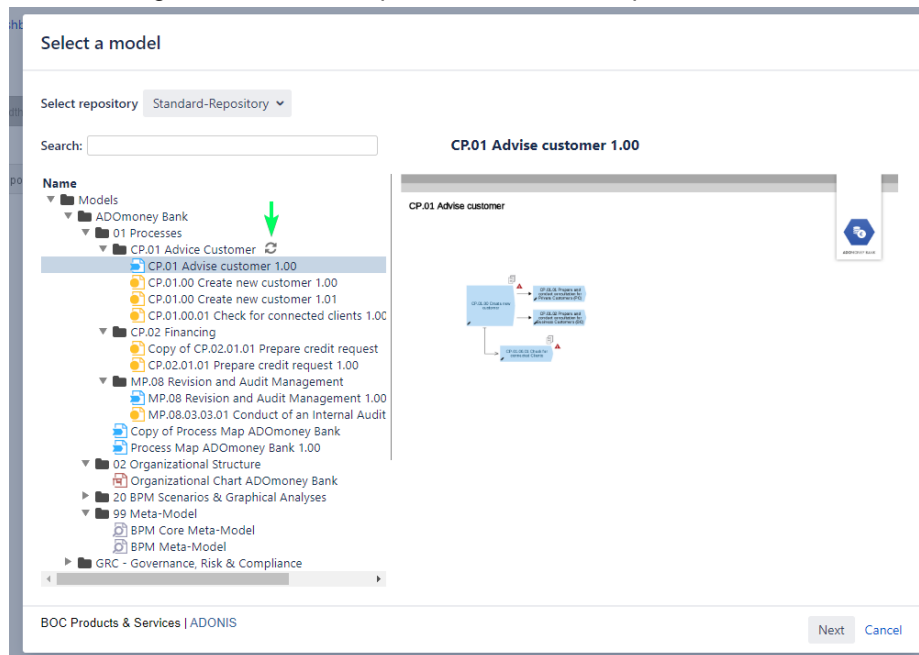


Figure 15: Reload a specific sub-tree

When this happens, a re-caching of the model group data is also triggered.

Furthermore, a re-caching is also triggered by a new ADONIS Process Manager/ADOIT Enterprise Architect scheduler:

Confluence administration						
Scheduled Jobs						
Job	Status	Last Execution	Next Execution	Avg. Duration	Actions	
Back Up Confluence	Scheduled		Mar 18, 2020 02:00	0	Run - Edit - Disable	
Check Cluster Safety	Scheduled	Mar 17, 2020 15:02	Mar 17, 2020 15:03	12	History - Run - Edit - Disable	
Clean Journal Entries	Scheduled		Mar 18, 2020 02:00	0	Run - Edit - Disable	
Clean Old Audit Records	Scheduled		Mar 18, 2020 00:00	0	Run - Edit - Disable	
Clean Temporary Directory	Scheduled		Mar 18, 2020 04:00	0	Run - Edit	
Clear Expired Mail Errors	Scheduled		Mar 18, 2020 03:00	0	Run - Edit	
Clear Expired Remember Me Tokens	Scheduled		Mar 20, 2020 00:00	0	Run - Edit	
Cluster Cache Compaction	Scheduled	Mar 17, 2020 15:00	Mar 17, 2020 16:00	11	History - Run - Disable	
COIS: Model Groups Cache	Scheduled	Mar 17, 2020 15:00	Mar 17, 2020 15:30	10	History - Run - Edit - Disable	
Conversion Queue Monitor	Scheduled	Mar 17, 2020 15:03	Mar 17, 2020 15:03	3	History - Run - Edit - Disable	
Deferred File Deletion	Scheduled	Mar 17, 2020 14:50	Mar 17, 2020 15:05	4	History - Run - Disable	
EHCache Cache Compaction	Scheduled	Mar 17, 2020 15:00	Mar 17, 2020 15:05	5	History - Run - Disable	
Email Daily Reports	Scheduled		Mar 18, 2020 00:00	0	Run - Edit - Disable	
Flush Edge Index Queue	Scheduled	Mar 17, 2020 15:02	Mar 17, 2020 15:03	6	History - Run - Disable	
Flush Local Task Queue	Scheduled	Mar 17, 2020 15:02	Mar 17, 2020 15:03	3	History	
Flush Mail Queue	Scheduled	Mar 17, 2020 15:02	Mar 17, 2020 15:03	2	History - Run - Edit - Disable	
Flush Task Queue	Scheduled	Mar 17, 2020 15:02	Mar 17, 2020 15:03	2	History - Run - Disable	
Jira Metadata Cache Configuration	Scheduled	Mar 17, 2020 14:20	Mar 17, 2020 15:20	78	History - Run - Edit	
Publish Daily Statistics	Scheduled		Mar 18, 2020 04:00	0	Run - Disable	
Publish Periodic Events	Scheduled		Mar 18, 2020 02:15	0	Run - Disable	
Purge Old Job Run Details	Scheduled		Mar 17, 2020 23:00	0	Run - Edit	

Figure 16: Scheduled Jobs

By default, it is configured to run every 30 minutes from 7 AM to 18 PM. This is configurable, but we recommend to not make it faster than every 5 minutes to not overload the servers.

8. Troubleshooting

8.1 Enterprise Edition: The class icons are missing from the macros

The web base URL in the system settings of ADONIS NP/ADOIT must be configured to include the web application name, for example: `https://mycompany.org/ADOIT_91/`.

8.2 Enterprise Edition: How to solve SSL handshake:

"sun.security.validator.ValidatorException: PKIX path building failed"

Indication

Error in Confluence log file: `sun.security.validator.ValidatorException: PKIX path building failed: sun.security.provider.certpath.SunCertPathBuilderException: unable to find valid certification path to requested target`

Description

This error indicates a problem with the encrypted communication (TLS) from *Confluence* to *ADONIS NP/ADOIT*. The validation of the certification chain cannot be established.

For more information and a general solution, read the Atlassian support article "[Connecting to SSL services](https://confluence.atlassian.com/kb/connecting-to-ssl-services-802171215.html)" (<https://confluence.atlassian.com/kb/connecting-to-ssl-services-802171215.html>)

Solution

- Ensure that a recent Java version is installed that includes the required global and intermediate certificates.

For *SaaS Customers of ADONIS NP/ADOIT*, these certificates are *DigiCert Global Root G2* and *Thawte TLS RSA CA G1*.

The following Java versions have the certificates included:

- Java 1.8.0_91 or newer (<https://www.oracle.com/technetwork/java/javase/8u91-relnotes-2949462.html>)
- Java 1.7.0_101 or newer (https://www.oracle.com/technetwork/jp/java/javase/documentation/javase7supportreleases-1601161.html#R170_101)
- Alternatively, you can download and manually import the certificates in the *Java keystore* (*site certificate*) and *Java truststore* (*global and intermediate CA certificates*), as described in the Oracle support article "[Working with Certificates and SSL](https://docs.oracle.com/cd/E19830-01/819-4712/ablqw/index.html)" (<https://docs.oracle.com/cd/E19830-01/819-4712/ablqw/index.html>).
- **Note:** If you use a custom keystore location, make sure that you provide JVM options as parameters (also see the support article for further details):

```
-Djavax.net.ssl.keyStore=<path to keystore>
-Djavax.net.ssl.keyStorePassword=changeit
-Djavax.net.ssl.trustStore=<path to truststore>
-Djavax.net.ssl.trustStorePassword=changeit
```

The certificates can be viewed and downloaded, when accessing the ADONIS NP/ADOIT webclient via the webbrowser by clicking on the lock icon (SSL info).

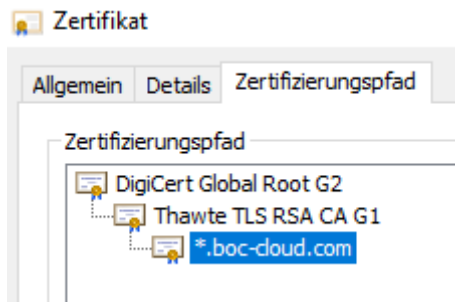


Figure 17: Import the *.boc-cloud.com certificate

Please be aware, that if you import the *.boc-cloud.com certificate manually into your *Java keystore*, your certificate will not automatically be updated, when a new version of the certificate is used.

The typical validity and update cycle for the *.boc-cloud.com certificate is two years.

8.3 Enterprise Edition: The connection from ADONIS Process Manager/ADOIT Enterprise Architect prompts for authentication

This can happen if the requests from *ADONIS Process Manager/ADOIT Enterprise Architect* do not go directly to the *Tomcat of ADONIS NP/ADOIT*, but instead go through an *Authentication server*. Typically, this means, that SSO is used but setup incorrectly. See [Additional setup for SSO scenarios](#) for further details.

8.4 Enterprise Edition: The macros using the metamodel are not working after enabling the metamodel REST APIs in the Admin Toolkit

If the metamodel REST API has been enabled after starting Confluence and setting up ADONIS Process Manager/ADOIT Enterprise Architect, then the macros using the metamodel will not work immediately.

For example, adding a Query Table macro can show the following warning message:

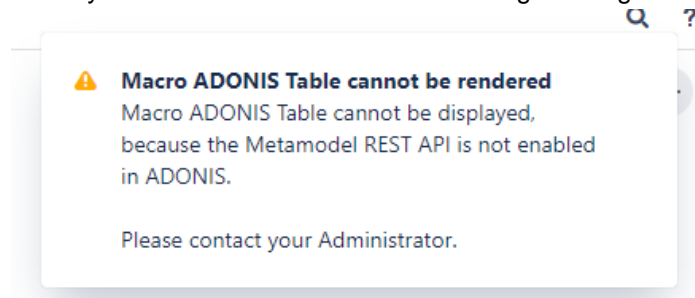


Figure 18: Warning message of Macro ADONIS Table

To make ADONIS Process Manager/ADOIT Enterprise Architect aware of the metamodel REST API, a Confluence administrator must reinitialize ADONIS Process Manager/ADOIT Enterprise Architect from the admin configuration page.

Steps to reinitialize ADONIS Process Manager / ADOIT Enterprise Architect

1. In Confluence, go to General Configuration
2. Open the ADONIS Process Manager/ADOIT Enterprise Architect Configuration
3. Hit the reinitialize button

2. Setup Connection

The following configuration includes:

- ADONIS Web URL: the URL that you normally use to access the *ADONIS Web Client*.
- ADONIS REST Identifier: the REST key for the authentication that is configured in the *ADONIS Admin*.
- ADONIS REST Secret Key: the REST secret for the authentication that is configured in the *ADONIS Admin*.
- Use cache for artefact groups: whether or not the model and object groups should be cached on *Conf*.
- Languages: comma-separated list of ISO 639-1 codes that specifies the *ADONIS* content languages that should be used.

Please note: When connecting *ADONIS* to your *Confluence* instance, all content that the technical user in *AL* If you are uncertain about this step, please refer to the [ADONIS Process Manager installation manual](#) and [con](#)


ADONIS Web URL:

ADONIS REST Identifier:

ADONIS REST Secret Key:

Use cache for artefactgroups: ☒

Languages:



By connecting to your Enterprise Edition you agree to our [privacy policy](#).

Figure 19: Reinitialize ADONIS Process Manager

4. After a while, a message will notify the success of the operation.
5. The macros using the metamodel will now work correctly.

Please note, that enabling the metamodel REST API in the Admin Toolkit requires a restart of ADONIS / ADOIT. If this did not happen, a restart must be done before following the steps for the ADONIS Process Manager/ADOIT Enterprise Architect reinitialization (see 2. Enterprise Edition: Configuration of ADONIS NP / ADOIT).